

TASMANIA FORESTRY HUB UPDATE

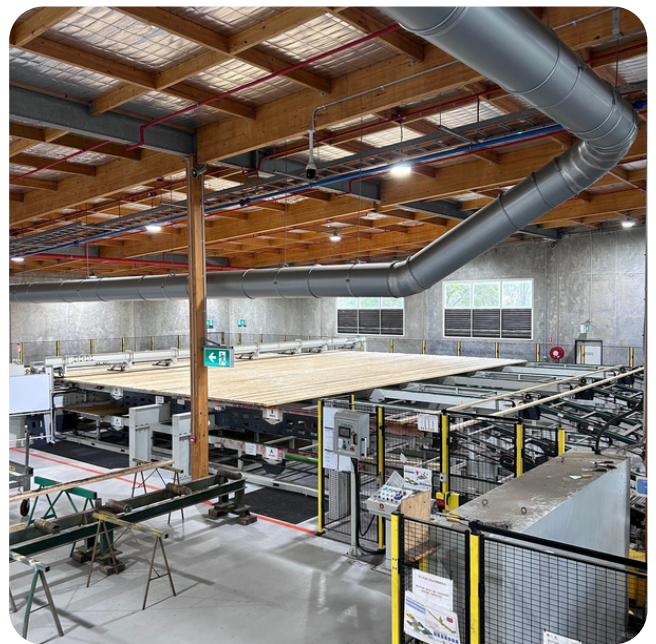
HUB NEWS

February saw Hub Managers from across the country come together for a two day meeting, hosted by the SE Queensland Hub in Maryborough.

First Nations Engagement is a priority for all Hubs and we discussed both the opportunities and challenges. A number of projects are underway across Hubs and HQP shared with us their [First Nations Engagement Framework](#).

In Tasmania, we are beginning our engagement with First Nations and are keen to learn from forest industry stakeholders on their engagement strategies.

We will be reaching out to stakeholders to learn more about both the challenges and opportunities experienced.



Hyne Timber GLT at Maryborough manufactures Australian timber GLT products in a fully automated facility. Undergoing a significant upgrade in 2020, the facility features GLT structural beams in the internal fit-out that is combined with the fully automated technology.

One of the Hub's project this year is a case study of the use of timber and timber products in commercial buildings.

The Hub's **Career Mapping Project Report** highlighted the importance of presenting the Tasmanian forest industry as an attractive career choice for young people. The TFFPN and Rural Alive & Well (RAW) are partnering to develop **Cultivate**, a dedicated youth forestry network. Both organisations are passionate about - and recognise the importance of - providing the best opportunity for the next generation to thrive within the forest industry.

To ensure this project meets the needs of youth and supports growth, forest industry employees 18-34 years old are invited to an online co-design meeting facilitated by RAW to discuss ideas of what the Cultivate Network may look like.



ACTION

If you are 18-35 years old please consider participating in the online session. Or, if you have young people 18-34 in your organisation or network, please encourage them to join in.

Meeting Date + Time: 4 March from 4-5pm
Contact Lauren Harper from RAW on
lharper@rawtas.com.au or 0487 111 479



Round 2 of the Commonwealth's **Support Plantation Establishment Program** is now open. This round is comprised of 2 funding opportunities:

- The first batch is open from 9 February to 15 April 2024
- The second batch is open from 15 April until 27 June 2024

The funding will support the establishment of new long-rotation softwood and hardwood plantation forests and assist the sector to respond to the projected growth in demand for domestically sourced timber resources.

The Hub Steering Committee is comprised of the following industry representatives: Steve Whiteley (Chair); Shawn Britton (Deputy Chair); Darren Davis (Treasurer); Owen Hoffmann; Dr Elizabeth Pietrzykowski; Scott Freeman and Andrew Morgan.